

TRANSPORT PLATFORM

A NEW ECONOMICAL AND SECURE ACCESS SOLUTION FOR MEN AND MATERIAL



INNOVATION AT WORK...

Hydro Mobile's new solution for the transport of men and material, the Transport Platform, offers an intelligent, cost effective alternative to current solutions. Any material required by a subcontractor can be easily and rapidly transported - internal framing and finishing, doors and windows, HVAC, plumbing, electrical and more, including debris removal.

Project: Hyatt Place

"With safety as the number one core value of CBS we found the Transport Platform provided by Universal Scaffold to be **the best solution for our men and materials access needs**. In addition, the flexibility of the platform design allowed us several options to meet our project and site requirements. The ability to provide our own operator to run the platform as needed while being able to perform other tasks, has played a role in allowing this type of equipment to work with tight budget constraints. Lastly, the reliable performance of the equipment coupled with the dependable local service and support has allowed for daily uninterrupted use and productivity of the Transport Platform."

Rick Lukes - Project Superintendent
Continental Building Systems - Homestead, PA



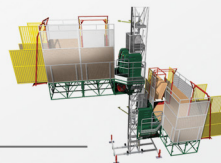
FLEXIBILITY...

Hydro-Mobile has transformed their versatile F-Series mast climbing work platform in to the Transport Platform. This allows for multiple configurations, designs and car sizes not possible with standard construction elevators.

Project: North Shore Residence Inn

"Massaro Corporation made the decision to use the Hydro-Mobile Transport Platform for its cost effectiveness and handling capacity in comparison to a standard construction elevator. The cost benefit **saved us nearly 50% in rental fees** and we were also able to operate the unit with our own manpower once trained by Universal Scaffold. The unit served our 10 story, 180 room hotel without issue for the 10 month duration. We will consider using this unit again with future projects."

Brian Miller - Project Manager
Massaro Company - Pittsburgh, PA



SAFETY AND RELIABILITY...

The Transport Platform offers easy of configuration and design while making no compromise to safety. Meeting or exceeding all codes and specifications related to transporting men and material.

INCREASED PRODUCTIVITY with COST SAVINGS...

Easy to operate and load / Does not require a dedicated operator / Operator training provided.

Project: Hamot Medical Center Addition

"The Transport Platform has **saved us and our subs a ton of man hours and money**. It has allowed for the safe expedited process of loading the entire building and removing debris as we needed with out having a designated operator at the controls full time."

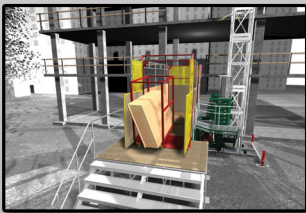
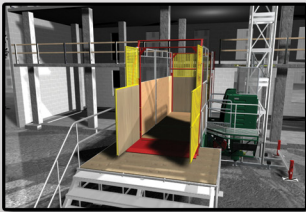
John Gregory - Project Superintendent
Perry Construction - Erie, PA



TRANSPORT PLATFORM

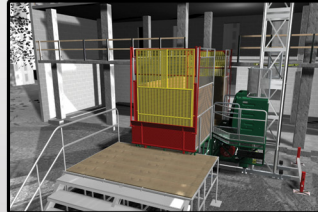
STEP 1

Loading of the transport platform



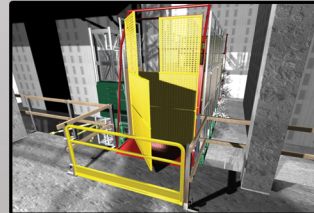
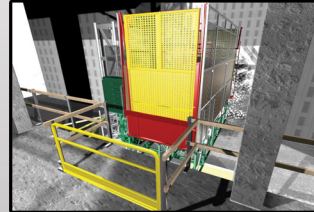
STEP 2

Closing of doors and vertical travel performed at easy-to-use control panel



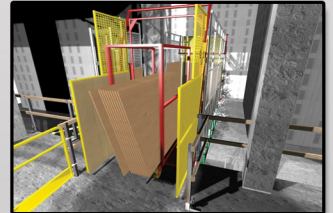
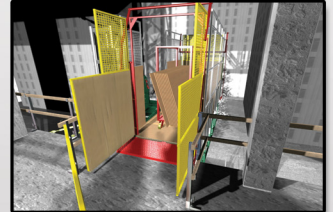
STEP 3

Reaching the destination floor, where guardrails are installed
Lowering of the bridge and opening of the doors



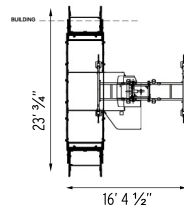
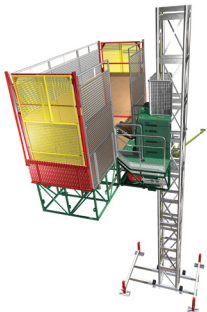
STEP 4

SECURE offloading



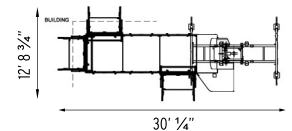
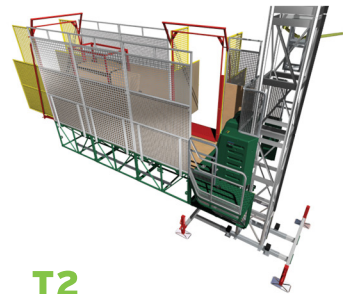
Multiple configurations available...

T1



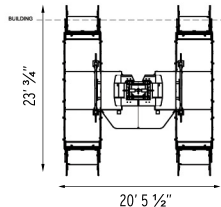
Capacity: 3,800 lb (1,720 kg)
Speed: Up to 38' (11.6 m) per minute
Internal dimensions: 55" x 177" to 205" x 75" (W x L x H)
(1,4 m x 4,5 m to 5,2 m x 1,9 m)

T2



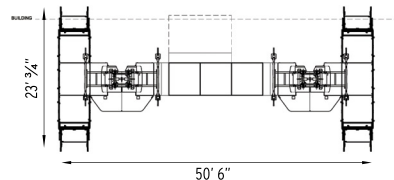
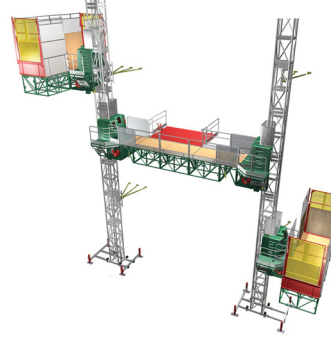
Capacity: 1,450 lb (658 kg)
300 lb (136 kg) max. on the last bridge
Speed: Up to 38' (11.6 m) per minute
Internal dimensions: 55" x 177" to 205" x 75" (W x L x H)
(1,4 m x 4,5 m to 5,2 m x 1,9 m)

T3



Capacity: 3,800 lb (1,720 kg) per unit
Capacity if linked: 4,000 lb (1,814 kg) per unit
Speed: Up to 38' (11.6 m) per minute
Internal dimensions: 55" x 177" to 205" x 75" (W x L x H)
(1,4 m x 4,5 m to 5,2 m x 1,9 m)

T4



Capacity: 3,800 lb (1,720 kg) on both cantilever unit
11,000 lb (4,989 kg) on bearing unit
Speed: Up to 38' (11.6 m) per minute
Internal dimensions: Cantilever units:
55" x 177" to 205" x 75" (W x L x H)
(1,4 m x 4,5 m to 5,2 m x 1,9 m)
Bearing unit:
138" x 236" (W x L)
(3,5 m x 6 m)