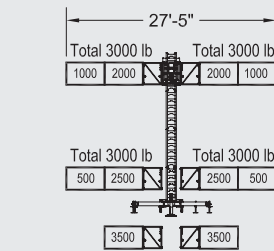
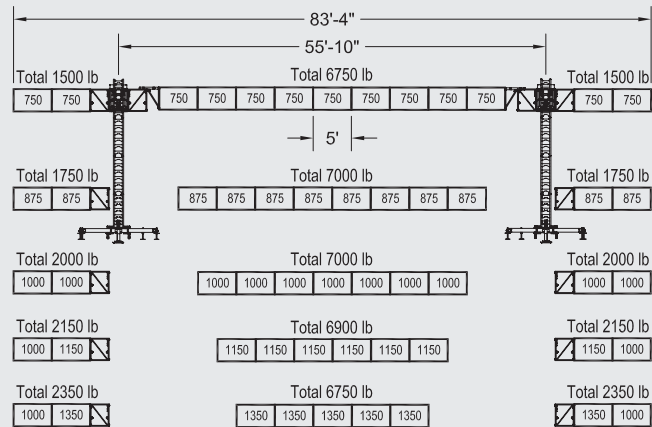




Platform dimension (transport)	W x L x H : 40" x 78" x 77" (1.0 m x 2.0 m x 1.96 m) (fully assembled)
Min./Max. platform length single mast	12' / 28' (3.6 m / 8.5 m)
Min./Max. platform length twin mast	36' / 84' (11 m / 25.6 m)
Maximum load capacity single mast (excluding persons and equipment)	6,000 lb. at 28' (2,722 kg at 8.5 m)
Maximum load capacity twin mast (excluding persons and equipment)	9,750 lb. at 84' (4,442.6 kg at 25.6 m)
Maximum height	Up to 250' (76 m) without prior authorization from Hydro Mobile
Tie distance	20' (6.1 m)
Free-standing single mast	20' (6.1 m) with base outriggers extended at a 30° angle
Free-standing twin mast	20' (6.1 m) with base outriggers extended at a 30° angle
Climbing speed	10' (2.5 m) per minute
Drive system	Hydraulic Ratchet Drive
Operating system	3.5" (8.9 cm) hydraulic cylinders @ 1,900 psi (13,100 kPa)
Engine type	11 HP gasoline engine
Safety device	
Emergency descent	Electrical independent control descent
Overspeed break	Gravity activated
Total platform weight	2,300 lb. (1,043 kg) (fully assembled)
Mast section	16" x 16" x 60" (40.6 cm x 40.6 cm x 1.5 m) • 223 lb. (101 kg) per section
Base dimension + weight	36" x 60" x 70" (91 cm x 152 cm x 178 cm) • 1,180 lb. (535 kg)

	Dimensions	Weight
60" bridge	60" x 62" x 36" (152 cm x 157 cm x 91 cm)	380 lb. (172 kg)
60" bridge extension	30" x 60" x 5" (76 cm x 152 cm x 13 cm)	50 lb. (23 kg)
30" bridge	30" x 62" x 36" (76 cm x 157 cm x 91 cm)	190 lb. (86 kg)
30" bridge extension	30" x 30" x 5" (76 cm x 76 cm x 13 cm)	28 lb. (13 kg)
Bearing bridge	30" x 62" x 36" (76 cm x 157 cm x 91 cm)	190 lb. (86 kg)
Access bridge	62" x 60" x 50 1/4" (157 cm x 152 cm x 127 cm)	720 lb. (327 kg)
Trailer	90" x 99" x 30" (229 cm x 251 cm x 76 cm)	845 lb. (383 kg)



Lengths	
5'	1.52 m
27'-5"	8.36 m
55'-10"	17.03 m
83'-4"	25.40 m

Weights		Weights		Weights	
500 lb.	227 kg	1,500 lb.	680 kg	3,000 lb.	1,361 kg
750 lb.	340 kg	1,750 lb.	794 kg	3,500 lb.	1,588 kg
875 lb.	397 kg	2,000 lb.	908 kg	6,750 lb.	3,060 kg
1,000 lb.	454 kg	2,150 lb.	976 kg	6,900 lb.	3,132 kg
1,150 lb.	522 kg	2,350 lb.	1,066 kg	7,000 lb.	3,178 kg
1,350 lb.	612 kg	2,500 lb.	1,134 kg		

P

SERIES

For more information on the P-Series or to locate your nearest distributor, call us now at: **1-888-484-9376** or visit our Web site: www.hydro-mobile.com



ELEVATING EFFICIENCY

125, de l'Industrie L'Assomption, Québec Canada J5W 2T9
Phone: 450.589.8100
Toll free: 1.888.484.9376
Fax: 450.589.0370
hydro@hydro-mobile.com

Distributor:

ELEVATING EFFICIENCY

High on safety

Hydro Mobile is committed to designing and manufacturing products that contribute to creating hazard-free work environments. It is the policy of the company to offer quality products that contribute to increased worker safety, security and longevity.



Productivity

Safety systems are built into all Hydro Mobile platforms. This reduces the number of work-related injuries and loss of man-hours. Taken together, these factors mean contractors can feel much more confident about their ability to meet deadlines.

Safety

Hydro Mobile's platforms are so safe that workers don't even need to be tied with a lifeline on the work area.

Ergonomy

Skilled replacements are becoming increasingly hard to find. Given the design characteristics of the platforms, materials

can always be placed at a comfortable height for workers. This lessens the need for bending and lifting relatively heavy weights, which significantly reduces long term wear-and-tear.

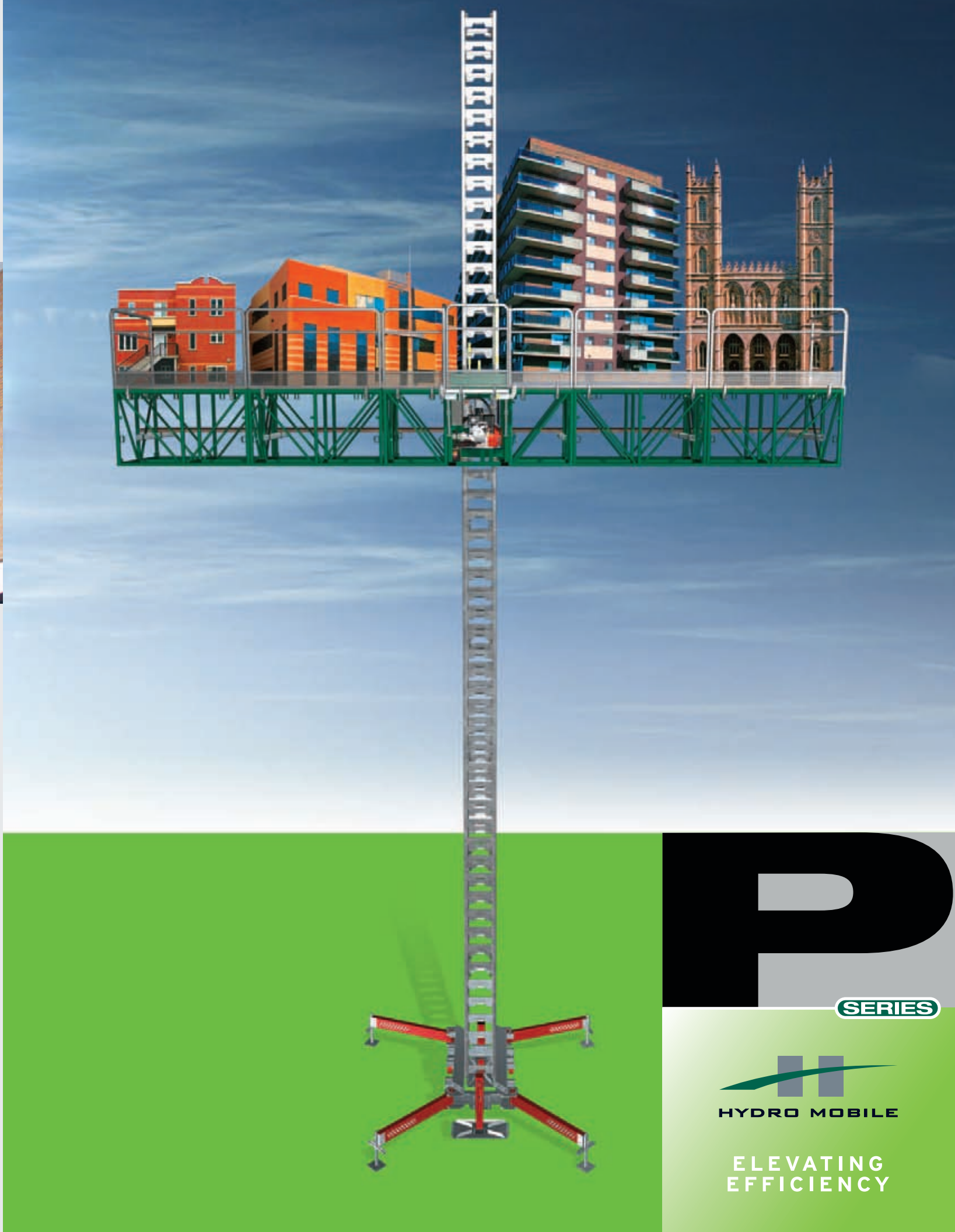
Training

Our emphasis on training is one of the key factors in increasing our clients' efficiency. We even have a "mini-university" where our clients can come and get accustomed to using the platforms they have purchased even before the platforms have been delivered. And our after-sales service is unrivalled.

"Safety and productivity are major concerns in the construction industry. A Hydro Mobile platform is set up once from the ground. From there, workers are safe all the way up. Furthermore, workers are positioned at a comfortable level, making it easier to lift materials, thereby reducing physical effort. Better ergonomY translates into increased productivity. And Hydro Mobile work platforms have greatly simplified my life regarding OSHA inspections."

— Patrick W. Murphy
Sucato Builders, NY

Printed in Canada DEC05-3000E Sun Marketing & Communications Ltd.



P THE HIGH-POWERED mini work platform

SERIES

The **P-series** is the perfect tool for smaller jobs that require high capacity or for restrained area work where most platforms can't fit, whether for new construction or restoration. With its high load capacity (6,000 lb. at 28' length) to size ratio, it is ideal for multi-residential or small commercial masonry jobs between 15' and 100' in height.

The P-series offers an attractive price/performance ratio. It is extremely portable and set up is both easy and very quick. In addition, it is adaptable to angle configurations and boasts a 10 feet per minute climbing rate. By reducing labor costs and set-up time, the P-Series can contribute to an estimated 30% increase in productivity.

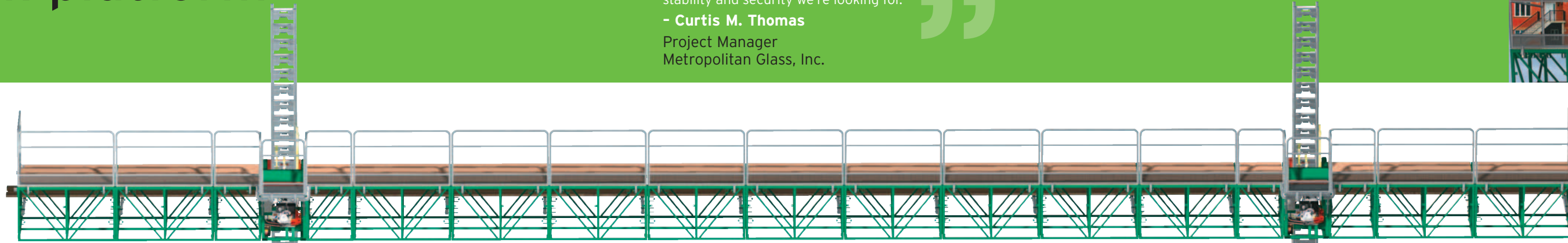
ELEVATING EFFICIENCY

Hydro Mobile designs and manufactures mast-climbing work platforms that integrate innovative structural, mechanical, ergonomic and safety features to increase productivity, facilitate project completion, reduce worker fatigue and considerably decrease the risk of injuries.

Hydro Mobile is also dedicated to providing training, client support and technical expertise to raise end-users proficiency with its products and help elevate efficiency at the work site.

"We really appreciate the versatility of the P-Series work platform. First, the multiple possible configurations of the unit allow easy access, for example, to inside or outside corners of buildings and it is also adaptable to other shapes. Second, it is very portable and easy to take to job sites. In the end, the product being well made, it brings us the dependability, stability and security we're looking for."

- **Curtis M. Thomas**
Project Manager
Metropolitan Glass, Inc.



84' twin-mast set-up

P-SERIES

- High capacity-to-size ratio
- Allows single- and twin-mast configurations, which most smaller platforms can't accommodate
- Quick assembly can be carried out by only two people
- Highly portable
- Easy and minimal maintenance



Single-mast set-up

The single mast set-up has a load bearing capacity of 6,000 lb. (2,730 kg) at the maximum 28' set-up length, very high for a platform of this size.

Trailer

A trailer system is available that can easily be hitched to a truck, making transporting platforms between jobsites very simple. On site, it can be used to quickly position platforms with no forklift, or move already set up equipment, which means easy relocation and significant time savings.



Bearing bridge adaptor

This accessory allows the installation of a twin mast set-up, which can raise the load bearing capacity to 10,000 lb. (4,545 kg) at the maximum 84' set-up length.

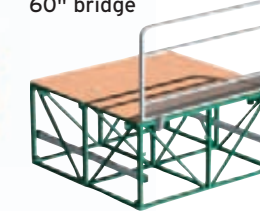
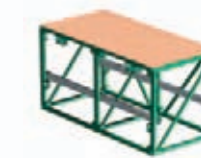
Access bridge

The access bridge allows users to easily make their way to the work platform at heights of up to 70'.



30" bridge

60" bridge



Extensions

The P-Series includes accessories like platform extensions that can increase work space up to 7' in width.



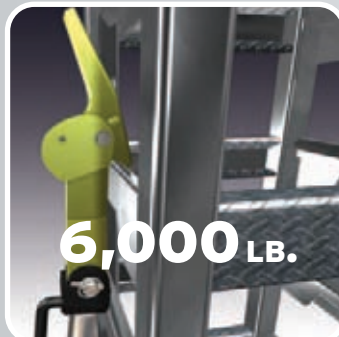
HIGH SPEED

Fast **two-person** hand assembly of platform up to **28' wide**.



HIGH-TECH

6,000 lb. load capacity provided by innovative hydraulic system.



HIGH ON SAFETY

Expandable up to a **7' wide** work area, reducing risk of injury.



HIGH EFFICIENCY

Platform can fit in a **36" opening**.

